

THE NEEDLE DANCER

American Needlepoint Guild

<http://www.tucsonang.org>

May 2016

A Message From Your Retired President

I would like to thank all of the members of my two Boards as well as the entire Tucson Guild for trusting me for two years with your chapter leadership. I was always unsure whether I would be able to accomplish this. Margaret did some very good convincing and shoring up my confidence in March of 2014. It has been fun, invigorating, frustrating and well worth all of the time spent in this endeavor.

Now the leadership has been passed on to Linda Kanora. I will continue on the Board as Treasurer so you will still have to see me at meetings and board meetings. Please give Linda the support and consideration that you have all given to me.

So now I will, hopefully, have more stitching time. I have much on my plate at home and will be kept busy with that as well.

Thanks again and just remember to find time to stitch every single day!

Charleane

Incoming Presidents Message

Hello Stitchers,

I'm very happy and excited to be the newest in a long line of Tucson ANG presidents. I will be out of town for the combined meeting but will be on the edge of my seat until I hear the election results. Please be patient while I learn my new job responsibilities.

I hope we have a wonderful, full of stitching, learning, sharing and laughing, year.
Linda

2016-2017 ELECTED AND APPOINTED OFFICERS

Office	Name
President	Linda Kanora
Vice President	Jan Sprague, Co-Chair
	Laura Cotter, Co-Chair
Secretary	Maura Robinson
Treasurer	Charleane Boyles
Ways and Means	Shirley Burns
Director At Large	Shirley Burns
Membership	Mary Christoph
Hospitality	Joyce Henderson
Publicity	Jeanie Demers
Newsletter	Debbie Hendrix, Editor
	Linda Harris, Publisher
Workshops	Jean Callis, Co-Chair
	Pat Nelson, Co-Chair
Website / EBlasts	Charleane Boyles
Hi Ho Stitchaway	Charleane Boyles, Co-Chair
	Linda Kanora, Co-Chair
Community Outreach	Laura Cotter
Historian	Vacant

MISSION STATEMENT

The objective of this Guild is to promote the educational and the cultural development of needlepoint through the participation in and the encouragement of the interest in the art of needlepoint. <http://www.needlepoint.org>

2016 SUMMER CHALLENGE INFORMATION

Purpose: To create a log cabin block (light and dark) by using a center stitch and 1 stitch with variations for light and 1 stitch with variations for dark.

You will receive: Instructions

You will need: 8" piece of 18 count canvas OR Congress Cloth, any color
8" stretcher bars (2 sets)
Threads/embellishments (at your whim)
Needles, scissors, etc.

At our May combined meeting, the instructions will be handed out for this year's summer challenge. Once again, it will be small for those that travel. You will have more individual choices this year.

Line Drawing -- The line drawn design will be attached. You may not deviate from the design size so that once again, when revealed, there will be a consistency of sorts. This means whether you use canvas or congress cloth, your piece should measure 5 ½ inches.

Threads – Threads may be from your stash or you may buy them or a combination. You will use 3 colors – center square, dark half, light half. You do not have to use the same thread for the all the dark side but should be close in color and the same for the light half.

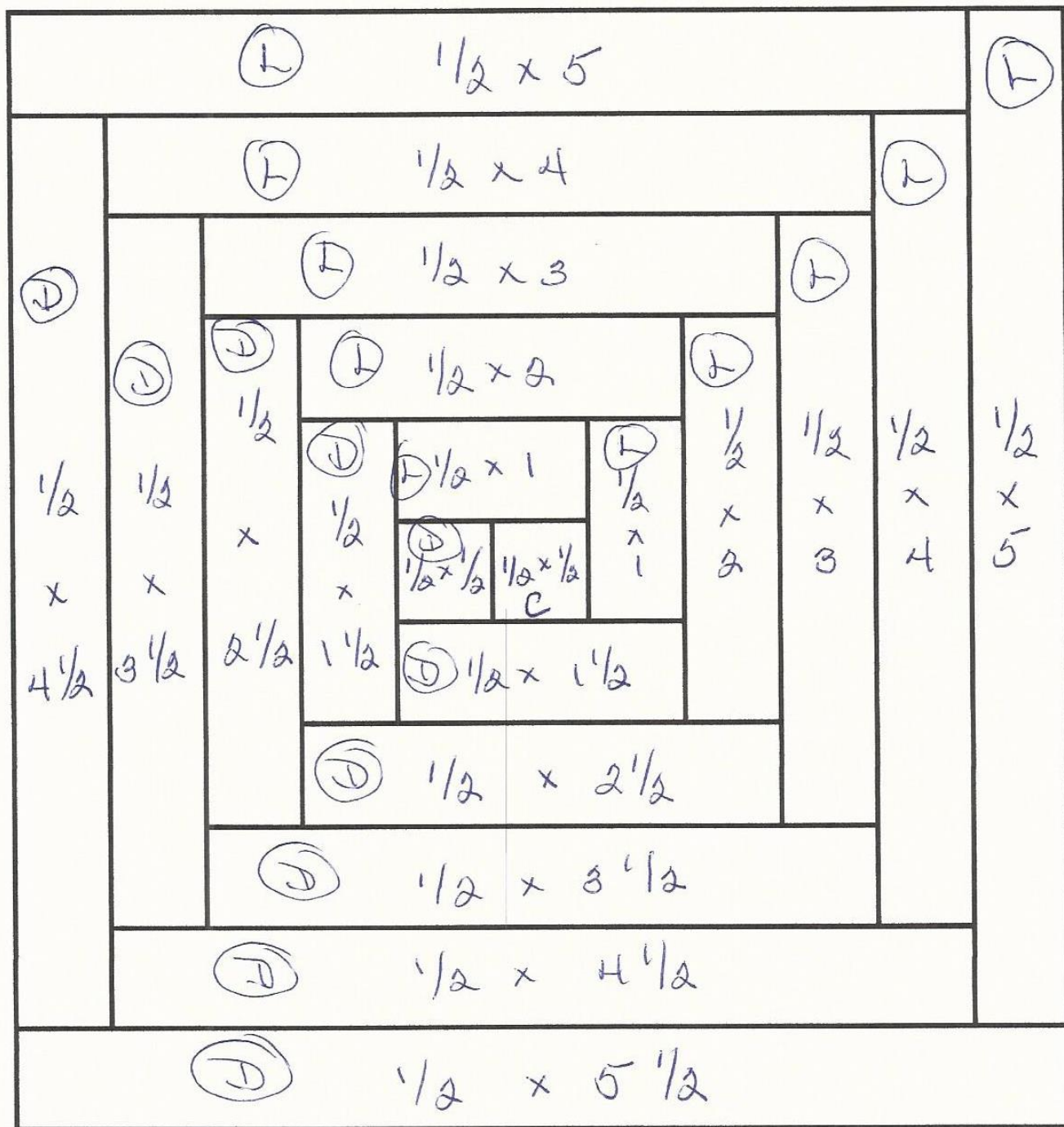
Embellishments -- You may embellish if you wish.

Stitches -- You will have a total of 3 stitches. One stitch will be for the center square. Suggestions would be a waffle stitch or a Jean Hilton stitch. Second stitch will be for the dark half. Use a stitch that has variations such as a Rhodes stitch or a Scotch stitch or you can just vary the size. Third stitch will be for the light side. Once again, use a stitch that has variations to it or adjust its size.

Color Choices – These are yours to choose. The center square in a traditional log cabin block is red or a variation of it standing for the chimney or hearth, the center of the home. You do not have to stay with a red color for your center square. The dark and light color should be distinct. There may be variations in texture, thread, hue, etc. Here is the stickler – these colors must mean something to you. Such as wedding colors, school colors, colors that represent an event, etc. You must explain the colors you use in your piece.

We will reveal our personal creations at the November combined meeting. It will be truly amazing as it was with last year's summer challenge when the projects are revealed and we all see what our stitchers have come up with. By having it the same design and size regardless of the choice of ground, there will be one constant factor but threads, stitches and embellishments are up to the creator. You may finish your challenge i.e. frame it, make a pillow, use it as a box top, etc.

If you have any questions, please contact Charleane by phone (520-549-7065) or by email (charleane1950@gmail.com).



NEW MEETING LOCATION INFORMATION

If you need a ride or directions to the new meeting location, please contact a Board Member.

Calendar 2016

Day Meeting: Mini Time Museum of Miniatures
 4455 E. Camp Lowell Drive
 10:00 AM – 2 PM

Night Meeting: TBD, Check your reminder notice

Board Meeting: River Road Library Second Saturday – 9 am

Stitch-In: The West classroom (River/Craycroft Rds)

JUNE 2016

SUN	MON	TUE	WED	THUR	FRI	SAT
			1	2	3	4
5	6	7	8	9	10	11
12	13	14	15	16	17	18
19	20	21	22	23	24	25
26	27	28	29	30		

DIRECTORS AT LARGE



HOSPITALITY

Joyce Henderson

No Report



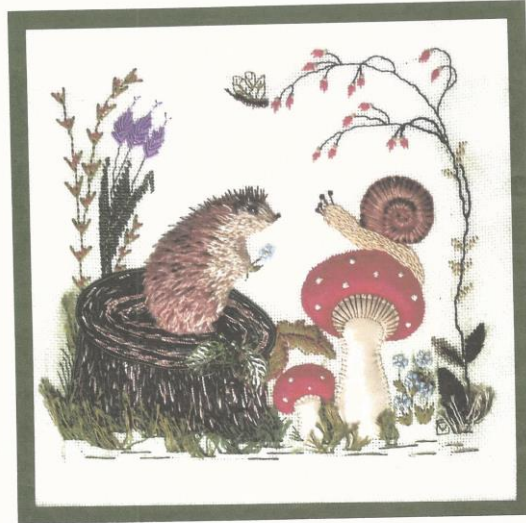
WORKSHOPS

Jean Callis and Pat Nelson

Stitchers!!! Your workshop committee has arranged this workshop as a delightful break from the summer heat. It will take place in July and be given by Sylvia Murariu. This fun project was offered at the ANG National Seminar and includes some new techniques that can enhance your canvas projects. We will be using the Pepper Pfeifer fund to pay for the teacher's fees and travel. The purpose of this fund is to add workshops to our offerings that include a wide range of technique. I hope you will join us. Please let me know if you will as soon as possible, we must have your name by June 15th to order kits.

Hello Cutie

Two day class by Sylvia Murariu



All rights reserved © by Sylvia Murariu 2015

HELLO CUTIE, Multimedia, 2 Day class By SYLVIA MURARIU

Class Description:

This lovely design can be framed or can be used to embellish a purse or a box. The congress cloth is painted using water paint before the design is transferred on. This class offers the students the opportunity to learn a variety of techniques such as: surface embroidery stitches (continental, chevron, back stitch, padding, bullion, alternating satin, giorde, French knots, straight, chain), dimensional padded stitches with layers of felt, thread and cord, leather and more. The emphasis will be on the hedgehog, which is worked separately. Material used will include embroidery floss, felt, rove, EdMar floss, beads, and Madeira gold fibers.

TECHNIQUE: Multimedia

DESIGN AREA: 6" x 6"

PROFICIENCY: all levels

KIT COST: \$78.00

KIT CONTENTS: Instructions, congress cloth with pattern already transferred, threads, beads, felt, leather, elastic, needles and a practice bag.

Students need to bring to class a 10/10 inches embroidery frame, embroidery scissors, scissors to cut metallic threads and wire, portable lamp, magnifier, thimble.

No pre-stitching required



PROGRAMS 2016 - 2017

Jan Sprague and Laura Cotter

MAY: Needlepoint Bingo – Join us for four rounds of fun and prizes during our annual meeting and potluck.

June: Favorite Blogs and Web Sites

July: Autumn Crackers from the Chapter Project Book

August: Sit-n-Stitch



WAYS AND MEANS

Shirley Burns

Thank you for all the donations for our May baskets!



MEMBERSHIP

Mary Christoph

Dear Tucson Chapter ANG Members,

Our fiscal year runs from June 1 to May 31. All local chapter dues in the amount of \$18.00 should be paid as of June 1, 2015. **If they are not received by July 1, 2015 you will be dropped from the chapter.**

PLEASE NOTE: YOUR NATIONAL DUES MUST BE CURRENT FOR YOU TO BELONG TO THE LOCAL CHAPTER. If you have any questions about whether your National Dues are current, please contact me and I can check for you.

Additionally, in order to participate in local chapter events (monthly meetings, Saturday stitch-ins, Hi Ho Stitch Away, bus trips, etc) you must be a member in good standing, ie both your National and Local Chapter Dues are paid and current.

Please complete the membership renewal form with all requested information. This is particularly important if any of your contact information has changed. The membership renewal form can be found in the newsletter or on the website. Submit the form with your check for \$18.00 to me for processing. Please feel free to contact me with any questions.

Mary Christoph
 Membership Chair
 7576 N.Mona Lisa Road #13202
 Tucson, AZ 85741
 (520) 321-9170 home
Marvy13202@gmail.com – New E-Mail Address

Please fill out the coupon below for all submissions.

Tucson Chapter ANG Renewal and Address or E-mail Change Form	
Name:	_____
Street Address:	_____
City, State and Zip Code:	_____
Home Phone Number:	_____
Cell Phone Number:	_____
E-mail:	_____
ANG Number:	_____
Tucson Chapter Members \$18.00	(P) Plural Members \$18.00
IF YOU DO NOT PLAN ON RENEWING - PLEASE ADVISE	
Please make checks payable to: Tucson Chapter ANG	
Send Payments to:	
Mary Christoph	
7576 N. Mona Lisa Road #13202	
Tucson, AZ 85741	

NEEDLEWORK • CLASSES • GIFTS • CARDS • TOYS

Thank you. These are our 2016 grant recipients: Arizona Blind and Deaf Children's Foundation ~ Aviva Children's Services ~ Blessings in a Backpack – Bloom Elementary ~ Emerge Center Against Domestic Violence ~ Iskashitaa Refugee Network ~ Miracle Square ~ Mobile Meals of Tucson, Inc. ~ Native American Advancement Foundation ~ The Shyann Kindness Project ~ St. Jose Women's Center ~ TVLC Weekend Blessing Bag Ministry

STORE HOURS:
Mon thru Sat
10am to 5pm

River Center @ Craycroft
5615 E. River, Suite 101
www.thewestinc.com



Our vision and mission is to improve the quality of life in the Tucson area and provide grants to qualified Tucson-area non-profit organizations.

520.299.1044