

# THE NEEDLE DANCER

The Tucson Chapter  
American Needlepoint Guild



## August 2007

### Tucson Chapter ANG Board 2007 – 2008

President	Judy Burgess
VP Nights	Wanda Shirey
VP Days	Angela Yardy
Treasurer	Myldred Richardson
Night Secretary	Mary Christoph
Day Secretary	Martha Hirsch
Director at Large	Mary Gamache
Publicity & Advertising	Barbara Lewis
Website contact	Charleane Boyles
Workshops	Sue Beveridge
Workshops	Barbara Lewis
Community Project	Sue Strause Margaret von Kuegelgen
Community Project Ways & Means	
Nights	Vacant
Ways & Means Days	Vacant
Hospitality Nights	Linda Harris
Hospitality Days	Nancy Eide
Membership	Susan Thompson
Historian	Kay Kopp
Newsletter Publisher	Fran Braverman
Newsletter Editor	Sue Swan

#### ANG Mission Statement

The object of this Guild is for educational and cultural development through participation in and encouragement of interest in the art of needlepoint.

# Calendar 2007

## August

SUN	MON	TUE	WED	THU	FRI	SAT
			1	2	3	4
5	6	7	8	9 Board Meeting 6-8 @ Woods Library	10	11
12	13	14	15	16	17	18 STITCH-IN 10am-5pm
19	20	21	22 Night Meeting 6:00 pm	23 Day Meeting 10:30 – 3:00	24	25
26	27	28	29	30	31	

## September

SUN	MON	TUE	WED	THU	FRI	SAT
2	3	4	5	6	7	8
9	10	11	12	13 Board Meeting See below	14	15
17	17	18	19	20	21	22 STITCH-IN 10am-5pm
23	24	25	26 Night Meeting 6:00 pm	27 Day Meeting 10:30 – 3:00	28	29
30						

## October

SUN	MON	TUE	WED	THU	FRI	SAT
	1	2	3	4	5	6
7	8	9	10	11 Board Meeting 6-8 @ Woods Library	2	13
14	15	16	17	18	19	20 STITCH-IN 10am-5pm
21	22	23	24	25	26 Combined Meeting @ Pima County Medical	27
28	29	30	31			

**Day Meeting:** Pima County Medical Society Building, 5199 E Farness Dr

**Night Meeting:** Streams in the Desert Lutheran Church, 5360 E Pima (1/2 block w. of Craycroft)

**Board Meeting:** The September 13<sup>th</sup> meeting will be at Myldred Richardson's house.  
5719 N Camino del Conde, Tucson, AZ 85718

**Stitch-In:** 3<sup>rd</sup> Saturday of the month. The West classroom (River/Craycroft Roads)

# President's Letter

Acting President's Letter for August Newsletter

Greetings,

Judy (your real President) has been able to spend some time at home before heading east to our ANG seminar in Baltimore and then on to Chicago for the EGA happening. On her return to the Bay area her son will have moved into a ground floor apartment and she will be able to help him until he is independently mobile. Please keep Judy and her family in your thoughts as Tim continues his journey to recovery.

The programs for this month are not as published on the 'annual list'. Thanks to Barbara Lewis we will have Mary Ellen Searcy present on 'Color'. This promises to be an exciting opportunity to extend our understanding of color. I do hope Sue Strause will be able to give her program later in the year and wish her a speedy recovery from her recent surgery.

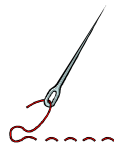
Just as our desert is growing from the plentiful summer rains, so too we can look forward to growing our stitching skills from the exceptional educational opportunities coming our way this year.

Godspeed to those traveling to Baltimore. Have a great time and bring back lots of good times to share.

As was voted upon earlier in the year monies earned during Seminar 2006 are earmarked for education expenses only. The large balance that we are carrying in our treasury is not for operational expenses hence the need to increase our dues.

Many thanks to all who are helping me through this new experience! I look forward to stitching together this month

Angela



# Hospitality

## Day Meeting

### August 2007

Barbara Lewis  
Karen Swanson

### September 2007

Kay Kopp  
Mari Jordan

Thanks,  
Nancy Eide

## Nite Meeting

### August 2007

Mary Christoph

### September 2007

Rhonda Davis

Thanks,  
Linda Harris

## Programs

Angela Yardy & Wanda Shirey

Please continue to bring friendship samplers to all future meetings to exchange with the next person on your list.

### August Program – Please note change below

Mary Ellen Searcy is going to be talking on the Uses of the Wedge of Color versus the Hue of Color. She will be handing out color copies of the basic color wheel, the Quiller color wheel and of her color wheel made with threads. She will also be using the 3-in-1 tool frequently used by quilters. It would be nice to have an idea of how many people will be at a meeting. Give me a call at 296-8672 and let me know.

You can still come to the meeting if you have forgotten to call.

Barbara Lewis

## The Year at a Glance

September – Reports from National Seminar

October – Combined meeting with Linda Reinmiller

November – Combined meeting/potluck Friendship Sampler exchange

December – No meetings

January – Brazilian heart

February – Video presentation

March – Encore program

April – Christmas project with guest presenters

May – Combined meeting/potluck with guest speaker and election of new officers

## Stitch – In

***Stitch -In*** at Barbara Richardson's  
Thursday September 13  
9:30 am to 4 pm  
Lunch will be provided

Come and join us for a day of stitching  
bring your own project or help with the  
Mrs. Claus by TS Designs for the  
2008 Seminar Auction  
In Indian Wells, Ca.

There are approximately 12 sections to do from  
small to large with a variety of threads and stitches.  
Once we get this completed, if someone from the guild would like  
to put this together this would be wonderful. If not I will  
send to National Auction chairman to find someone to complete  
the project.

RSVP to Barbara at 818-0406

## HI HO STITCH AWAY – OCTOBER 19<sup>TH</sup> – 21<sup>ST</sup>

Our annual HI HO Stitch Away in October is still \$100.00 which includes single share of a double room for two nights, breakfast on Saturday and Sunday, High Tea on Saturday afternoon with hats, boas and gloves (if you have them...if not, the B and B has quite a supply) and wine on Friday and Saturday evenings. PLUS there is a great stitching room with windows and views on three sides. This wonderful get away weekend of stitching, chatting, walking in the cactus garden, chatting, looking at the views, chatting, counting hummingbirds, chatting, and relaxing, should not be missed! If we fill the Inn we can leave our stitching out the whole time we are there, and some have been known to wander about in their "jammies".



We usually go out to dinner on Friday night at the Amado Inn (average cost is \$25.00) and the rest of the meals are taken care of by the amount of snack we bring.....

Deadline for payment is our September Day meeting – September 27<sup>th</sup>, or you can mail your check to Margaret von Kuegelgen. Space is limited to 22, so sign up early. Please note on the coupon if you already have a roommate, or if you have difficulty climbing stairs (some rooms are on the second floor). Some of the rooms have twin beds, and some have a queen with a roll away (which is comfortable). I do my best to accommodate any physical restrictions.

The Stitch Away is held at the AmadoTerritory Ranch located at 3001 E. Frontage Road, Amado, AZ 85645.

For pictures of the ranch please visit <http://www.amado-territory-inn.com>.

### HI HO STITCH AWAY SIGN UP & PAYMENT COUPON

NAME \_\_\_\_\_

ADDRESS \_\_\_\_\_

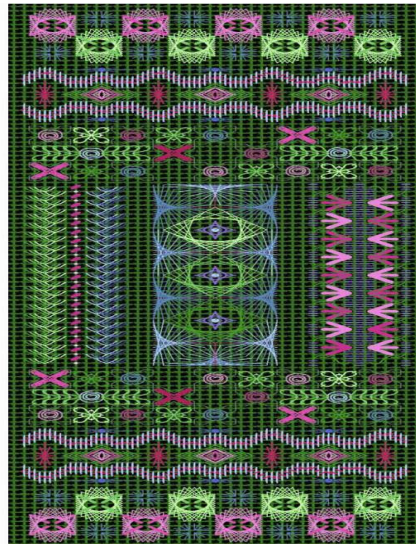
ROOMMATE \_\_\_\_\_

PHYSICAL RESTRICTION - GROUND FLOOR \_\_\_\_\_

Please mail this coupon and check for \$100.00 payable to **Tucson Chapter ANG** to:  
Margaret von Kuegelgen, 158 La Flecha, Green Valley, AZ 85614

Linda Reinmiller will be joining us beginning Friday, Oct. 26 to Sunday Oct. 28, 2007. Friday evening will be a combined day/evening meeting and Linda will do a talk on using color in your project. Saturday and Sunday will be a workshop, Garden Walk Revisited, designed to teach students about choosing color for a project. You will choose one of 4 colors on 18 count canvas: Victorian Green, DMC 500, Victorian Red, DMC 498, Antique Blue, DMC 930 and Black. Canvas size is 10" by 19" and the design area is 4 1/8 x 13 1/2. During class each student will choose their threads starting with an overdyed silk perle, perle cotton, flosses, metallic braids, fine sewing metallics, and beads. This is a fun class that will leave you with more confidence in choosing colors for future projects. The cost will be \$95 plus \$5 for S/H prework for a total cost of \$100.00.

The Workshop Sign Up deadline is September 1, 2007. The Workshop will be held at the Jr. League Board room, River Rd just east of Campbell. Don't miss your opportunity to take this exciting two day workshop and use the coupon below to register.



## Linda Reinmiller Workshop Garden Walk Revisited SIGN UP & PAYMENT COUPON

NAME \_\_\_\_\_

ADDRESS w/CITY/STATE/ZIP \_\_\_\_\_

**CANVAS COLOR CHOICE CIRCLE ONE: GREEN BLUE RED BLACK**

Please mail this coupon and check for \$100.00 payable to **Tucson Chapter ANG** to:  
Barbara Lewis, 8041 E. Presidio RD., Tucson, AZ 85750

Tony Minieri will be joining us in February 2008 for 2 different workshops, on Saturday and Sunday February 23rd and 24th and on Tuesday and Wednesday, the 26th and 27th. He will teach 2 different classes at different proficiency levels. One will be a teapot and the other will be a geometric.

Carole Lake will be with us September 27th and 28th 2008. Her project is yet to be chosen.

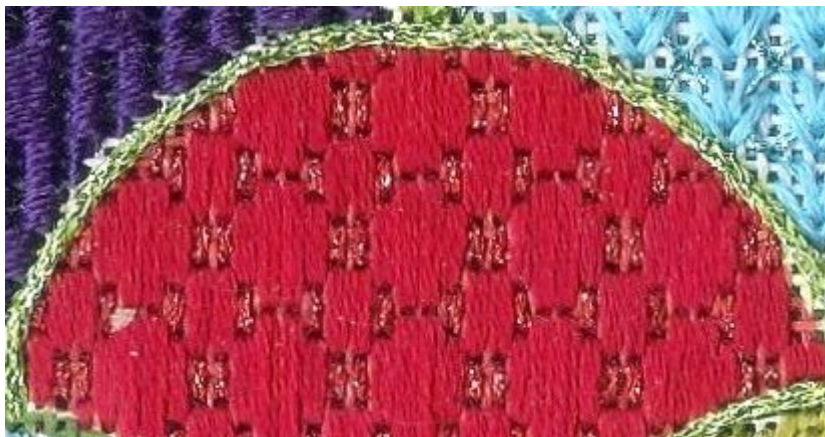
Mark your calendars!

## Stitch of the Month

## Brenda Hart

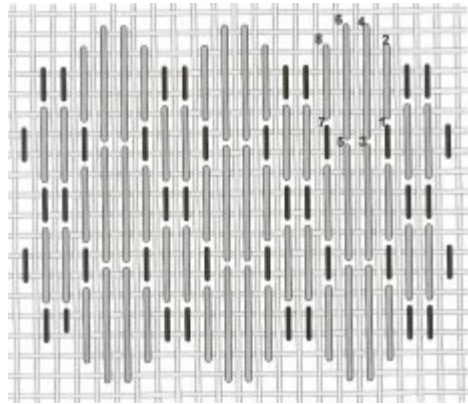
### August 2007: Hungarian Variation

August stitch of the month is a Hungarian variation. I especially like to use the stitch on a painted canvas on which flower petals have been painted. Usually flower petals are round or curved, and I like to mimic the shape of these petals as closely as I can. My personal preference is not to use a square or rectangular stitch in round or curved areas. In other words, I would not use a square shaped stitch on a flower petal. This should give you some ideas for the use of this stitch. I wouldn't use it as a stitch on animals, or mountains, or trees, unless they were childish or cartoonish looking pictures.



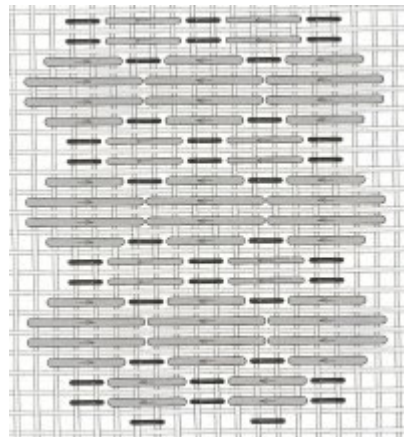
I use 4 plies of floss or silk on 18 mesh canvas, and usually 6 plies of floss or silk on 14 mesh canvas. I say usually, because certain colors of floss or silk seem thinner than others, especially some of the darker colors. If you find that 6 plies are not covering the canvas well and you are using your laying tool, then bump the thread up a ply or two.





[Click to enlarge](#)

On this stitched sample, I used silk for all the stitches except the ones printed in black. Because I stitched the sample on an 18 mesh painted canvas, I used size 8 Kreinik fine braid. Some may wish to use a heavier metallic thread such as Kreinik size 12 Tapestry braid. For size 14 mesh canvas, I would use size 16 medium braid. If you are using a wool thread such as Medici or a wool blend such as Burmilana, I would use 2 plies on 18 mesh, and 3 or 4 plies for 13 or 14 mesh canvases.



[Click to enlarge](#)

*Portions of this Website presenting information on this project may be printed or electronically reproduced by individual stitchers for their personal use and by ANG Chapters for use in their newsletters and Chapter activities. ANG Chapter republication of these pages should give credit to Stitch of the Month and ANG, Inc.*

The following members should renew the local chapter dues:

**Last newsletter if not renewing:**

Marjory Allen  
Chris Ausman  
Lori Fluker  
Pat O'Malley

**Dues Expiring in August**

Christine Fellner, Stephanie Griffith, Nancy Pfeifer, Shelly Pope, Mary Ramsey

**Dues Expiring in October**

Fran Braverman, Kay Kopp, Dale Miller, Elaine Postlewaite, Sue Strause, Earla Swope, Susan Thompson

**Tucson Chapter ANG Renewal and Address or E-mail Change Form**

Name \_\_\_\_\_ Phone \_\_\_\_\_

Street Address \_\_\_\_\_

City and State \_\_\_\_\_ ZIP+4 \_\_\_\_\_

E-mail \_\_\_\_\_ FAX \_\_\_\_\_

ANG Number \_\_\_\_\_

Tucson Chapter Member \$12.00 (P) Plural Member \$12.00

**IF YOU DO NOT PLAN ON RENEWING – PLEASE ADVISE**

Please make checks payable to: **TUCSON CHAPTER ANG**

Send Payment to:

**Susan Thompson**  
**5440 N. Ventana Vista Rd.**  
**Tucson, AZ 85750-7202**

**AMERICAN NEEDLEPOINT GUILD  
TUCSON CHAPTER**

ALL ITEMS INCLUDE ANG LOGO EMBROIDERY ON THE LEFT CHEST  
LARGER SIZES AVAILABLE

<b>POLO SHIRTS (mens sizing)</b>	Small 34-36	Med 38-40	Large 42-44	XL 46-48	XXL 50-52	XXXL 54-55		Add \$3.00 for XXL	TOTAL
White							X \$25		
Butter							X \$25		
Bimini Blue (like a carolina blue)							X \$25		
Navy Blue							X \$25		

<b>LADIES POLO SHIRTS</b>	Ladies Small 6-8	Ladies Med 10-12	Ladies Large 14-16	Ladies XL 18-20	Ladies XXL 20	Ladies XXXL		Add \$3.00 for XXL	TOTAL
White							X \$25		
Butter							X \$25		
Bimini Blue							X \$25		
Navy Blue							X \$25		
Mango (coral/salmon)							X \$25		
Light Pink							X \$25		

<b>SWEATSHIRTS</b>	Mens Small 34-36	Mens Med 38-40	Mens Large 42-44	Mens XL 46-48	Mens XXL 50-52	Mens XXX L 54-55		Add \$3.00 for XXL	TOTAL
White							X \$25		
Natural							X \$25		
Light Pink							X \$25		
Light blue							X \$25		
Navy Blue							X \$25		
Sand							X \$25		

<b>DENIM SHIRTS (mens sizing)</b>	Small 34-36	Med 38-40	Large 42-44	XL 46-48	XXL 50-52	XXXL 54-55		Add \$3.00 for XXL	TOTAL
Long Sleeve							X \$30		
Short Sleeve							X \$28		

**TOTAL AMOUNT DUE \$ \_\_\_\_\_**

Mens sizing has been used for a longer shirt. Smaller sizes are also available in sweatshirts and denim shirts.  
Please indicate if a smaller size is needed. Items will be delivered to meetings.

Name \_\_\_\_\_

Phone \_\_\_\_\_ Email \_\_\_\_\_

Make checks payable to  
**TUCSON CHAPTER ANG**  
Mail to:  
Carol Karrle  
11705 Calle De Samuel Tucson, Az. 85749

# **The West** has re-opened!!

Please stop by and see our all **NEW LOOK** & Merchandise

**Expanded** Needlework Section

**Expanded** Thread Selection

**Expanded** Canvas Selection

Needlework

Gifts & Jewelry

Paper Products

Cards & Cookbook

Toys & Infant Items

Over \$1,800,000 in grants to local charities since 1981

Proceeds Benefit Women's & Children's Charities

Store Hours: Monday – Saturday 10 – 5

## **THE NEEDLE DANCER** **American Needlework Guild**

### **First Class**

**Do not delay**

Dated material