

# THE NEEDLE DANCER

The Tucson Chapter  
American Needlepoint Guild



## July 2007

### Tucson Chapter ANG Board 2007 – 2008

President	Judy Burgess
VP Nights	Wanda Shirey
VP Days	Angela Yardy
Treasurer	Myldred Richardson
Night Secretary	Mary Christoph
Day Secretary	Martha Hirsch
Director at Large	Mary Gamache
Publicity & Advertising	Barbara Lewis
Website contact	Charleane Boyles
Workshops	Barbara Lewis
Community Project	Sue Strause Margaret von Kuegelgen
Community Project Ways & Means	
Nights	Vacant
Ways & Means Days	Vacant
Hospitality Nights	Linda Harris
Hospitality Days	Nancy Eide
Membership	Thompson, Susan
Historian	Kay Kopp
Newsletter Publisher	Fran Braverman
Newsletter Editor	Sue Swan

#### ANG Mission Statement

The object of this Guild is for educational and cultural development through participation in and encouragement of interest in the art of needlepoint.

# Calendar 2007

## July

SUN	MON	TUE	WED	THU	FRI	SAT
1	2	3	4	5	6	7
8	9	10	11	12 <b>Board Meeting 6-8 @ Woods Library</b>	13	14
15	16	17	18	19	20	21 <b>STITCH-IN 10am-5pm*</b>
22	23	24	25 <b>Night Meeting 6:00 pm</b>	26 <b>Day Meeting 10:30 – 3:00</b>	27	28
29	30	31				

## August

SUN	MON	TUE	WED	THU	FRI	SAT
			1	2	3	4
5	6	7	8	9 <b>Board Meeting 6-8 @ Woods Library</b>	10	11
12	13	14	15	16	17	18 <b>STITCH-IN 10am-5pm</b>
19	20	21	22 <b>Night Meeting 6:00 pm</b>	23 <b>Day Meeting 10:30 – 3:00</b>	24	25
26	27	28	29	30	31	

## September

SUN	MON	TUE	WED	THU	FRI	SAT
						1
2	3	4	5	6	7	8
9	10	11	12	13 <b>Board Meeting TBD</b>	14	15 <b>STITCH-IN 10am-5pm</b>
17	17	18	19	20	21	22
23	24	25	26 <b>Night Meeting 6:00 pm</b>	27 <b>Day Meeting 10:30 – 3:00</b>	28	29
30						

**Day Meeting:** Pima County Medical Society Building, 5199 E Farness Dr

**Night Meeting:** Streams in the Desert Lutheran Church, 5360 E Pima (1/2 block w. of Craycroft)

**Board Meeting:** July 12<sup>th</sup> at Woods Library 6:00 – 8:00 p.m.

**Stitch-In:** The West

# President's Letter

Dear Fellow Stitchers,

I am writing this letter as Judy is at the bedside of her son in San Francisco. He was involved in a serious car accident about a week ago and today remains in a medically induced coma. He has numerous fractures, including vertebra, and is on a ventilator but is starting to breath on his own. Judy is staying at a hotel about a mile from the hospital and says she is doing well. She was on her way home from her recent trip to the east coast when she received this news so she headed directly to Palo Alto. Please remember Judy and her family in your prayers.

I hope everyone is enjoying this summer season. I am catching up on projects from stitching to knitting and sewing. The sampler project has been particularly enjoyable, as it has taken me out of my comfort zone of stitches. I can hardly wait for the unveiling in November.

At the November combined meeting, the Board will ask that you vote to approve increasing our chapter dues from \$12 to \$18 per year, effective upon National's approval of our revised bylaws. This will be only a 50 cent increase per month, but that is enough to make our operating budget balance without needing the additional income from opportunity baskets.

You may wonder why we are recommending making the increase concurrent with approval of our new bylaws. That is because once those bylaws are approved, we will begin to shift to having all members renewing their dues at the same time each fiscal year. We think it will be less confusing and most fair to all concerned if both of these two changes occur at the same time. (Thanks to Martha for this eloquent record of the recommendation from the Board meeting last night.)

Looking forward to seeing you later this month. Stay cool and safe travels to those venturing afar.

Angela Yardy  
Vice President, Days

Please continue to bring friendship samplers to all future meetings to exchange with the next person on your list.

### **July Program**

Going to Market with the owner of The Busy Needle - Susan Byrd from The Busy Needle will be our guest speaker talking about going to market in Dallas.

### **The Year at a Glance**

August – Painting canvas with Sue Strause

September – Reports from National Seminar

October – Combined meeting with Linda Reinmiller

November – Combined meeting/potluck Friendship Sampler exchange

December – No meetings

January – Brazilian heart

February – Video presentation

March – Encore program

April – Christmas project with guest presenters

May – Combined meeting/potluck with guest speaker and election of new officers

Please cover any electrical cords used at meetings with tape to prevent anyone tripping or accidental mishaps.

# Hospitality

## Day Meeting

June Peggy Lawton & Dee Lanier

### July 2007

Angela Yardy  
Judy Burgess

### August 2007

Barbara Lewis  
Karen Swanson

### September 2007

Kay Kopp  
Marj Jordan

October - combined meeting

Thanks,  
Nancy Eide

November - combined meeting

### January 2008

Jo Middlestead  
Myldred Richardson

### February 2008

Angela Yardy  
Nancy Eide

### March 2008

????

### April 2008

Kay Kopp  
Sue Beveridge

## Nite Meeting

June Barbara Lewis

July Carol Karle

August Mary Christoph

September Rhonda Davis

October Pat Britton

November Mary Gamache

### 2008

January

February Linda Harris

March Mary Christoph

April

Thanks,  
Linda Harris

### Thank You from Earla Swope

This is the best I came up with to thank each and every one of you who called, sent cards, and prayers for a speedy recovery from my stroke. I am happy to report they worked as I have 99% recovery and hope to see you all soon. My thanks and love to each and every one.

Earla Swope

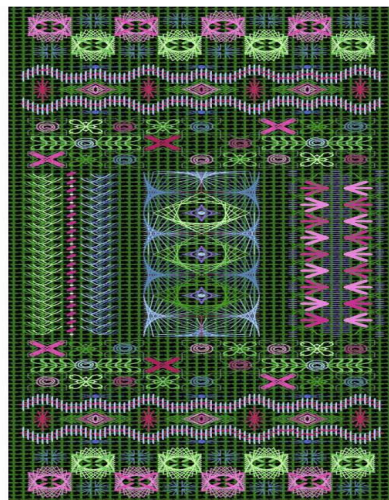
### Future new member

Amanda Louise Thompson born June 28th, 2:50pm at St Joseph's. She weighed 7lb 1oz and measured 19.5 inches. Mother and daughter are doing well and will try and make the meeting this month.

## Future Workshops

Barb Lewis

Linda Reinmiller will be joining us beginning Friday, Oct. 26 to Sunday Oct. 28, 2007. Friday evening will be a combined day/evening meeting and Linda will do a talk on using color in your project. Saturday and Sunday will be a workshop, Garden Walk Revisited, designed to teach students about choosing color for a project. You will choose one of 4 colors on 18 count canvas: Victorian Green, DMC 500, Victorian Red, DMC 498, Antique Blue, DMC 930 and Black. Canvas size is 10" by 19" and the design area is 4 1/8 x 13 1/2. During class each student will choose their threads starting with an overdye silk perle, perle cotton, flosses, metallic braids, fine sewing metallics, and beads. This is a fun class that will leave you with more confidence in choosing colors for future projects. The cost will be \$95 plus \$5 for S/H prework. More information will be coming.



Tony Minieri will be joining us in February 2008 for 2 different workshops, on Saturday and Sunday February 23rd and 24th and on Tuesday and Wednesday, the 26th and 27th. He

will teach 2 different classes at different proficiency levels. One will be a teapot and the other will be a geometric.

Carole Lake will be with us September 27th and 28th 2008. Her project is yet to be chosen.

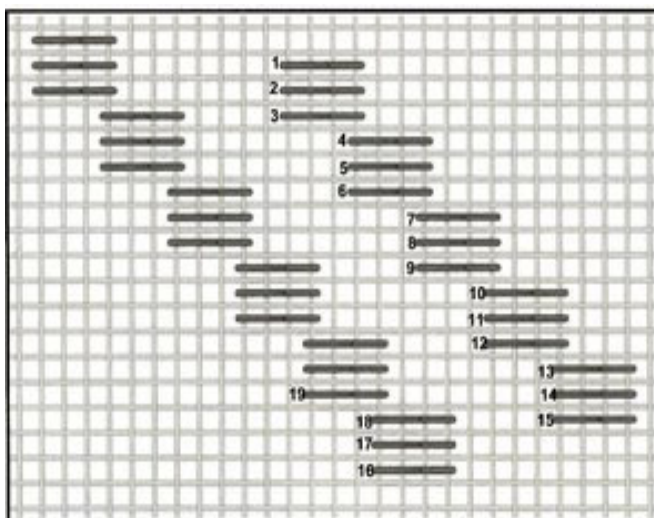
Mark your calendars!

## Stitch of the Month

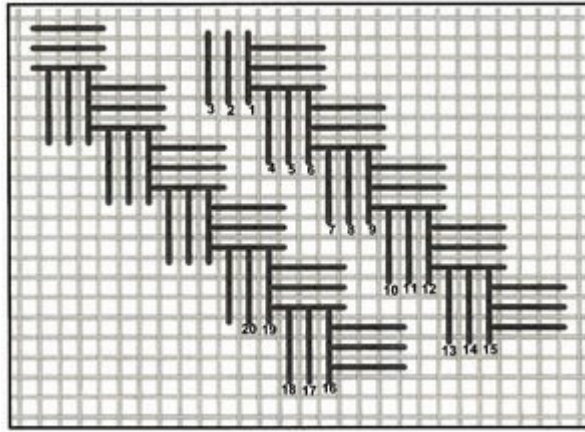
Brenda Hart

Ladies and Gentlemen, July Stitch of the Month is the Woven Braid stitch. I like the stitch best on 18 mesh. However, by bumping up the number of plies, or using a heavier thread or yarn, the stitch will also look lovely on 14 mesh.

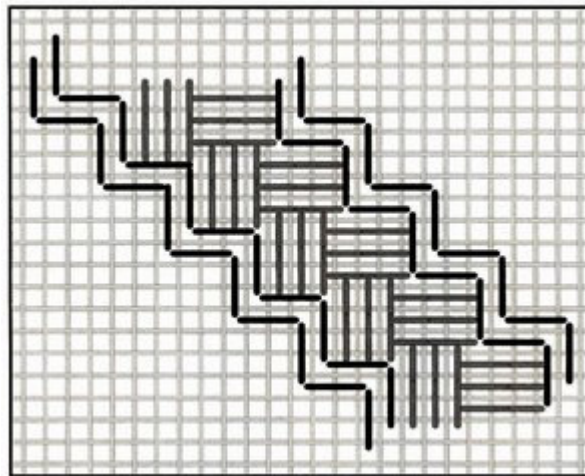
A. Use 4 plies of silk, floss, or 2 plies of a thread such as Burmilana for the first step (horizontal stitches) on 18 mesh canvas. On 14 mesh canvas, use 6 plies of silk, floss, or 3 plies of Burmilana or Medici.



For the second step, (vertical stitches) choose a very close value of the same thread used for step one. Example: Anchor floss #187 and #188. It seems to look much nicer when two close values of thread are used rather than two completely different colors.

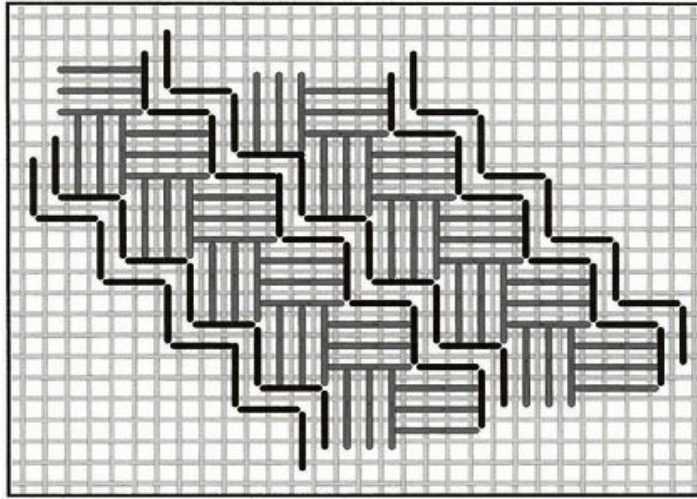


C. For the third step (bold black lines) a metallic thread would be an excellent choice. A rayon thread is another thread that would work very well in this area.



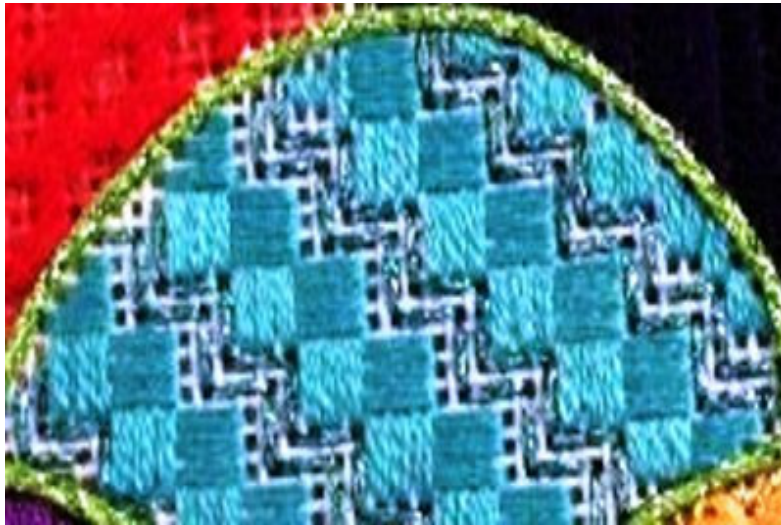
This is the area to use a different color or accent color. For instance, you might choose a silver, gold, or a matching color... any of these colors would work well.





The Woven Braid stitch could be used on a mountain, grassy field, or lady's skirt if it is a large enough area.

The stitched sample is Soie D'Alger and size 8 Kreinik fine braid. As you can see, size 12 Tapestry braid would probably fill the area better.



*Portions of this Website presenting information on this project may be printed or electronically reproduced by individual stitchers for their personal use and by ANG Chapters for use in their newsletters and Chapter activities. ANG Chapter republication of these pages should give credit to Stitch of the Month and ANG, Inc.*

The following members should renew the local chapter dues:

Name	Dues Expiring
Allen, Marjory	7-Jun
Ausman, Chris	7-Jun
Fluker, Lori	7-Jun
O'Malley, Pat	7-Jun
Trueba, Debbie	7-Jun
Britton, Pat	7-Aug
Davis, Rhonda	7-Aug
Fellner, Christine	7-Aug
Griffith, Stephanie	7-Aug
Jeffery, Sandy	7-Aug
Mueller, Joan	7-Aug
Pfeifer, Nancy "Pepper"	7-Aug
Pope, Shelly	7-Aug
Ramsey, Mary	7-Aug
Richardson, Myldred	7-Aug

### Tucson Chapter ANG Renewal and Address or E-mail Change Form

Name \_\_\_\_\_ Phone \_\_\_\_\_

Street  
Address \_\_\_\_\_

City and State \_\_\_\_\_ ZIP+4 \_\_\_\_\_

E-mail \_\_\_\_\_ FAX \_\_\_\_\_

ANG Number \_\_\_\_\_

Tucson Chapter Member \$12.00 (P) Plural Member \$12.00

**IF YOU DO NOT PLAN ON RENEWING – PLEASE ADVISE.**

Please make checks payable to: **TUCSON CHAPTER ANG**

Send Payment to:  
**Susan Thompson**  
**5440 N. Ventana Vista Rd.**  
**Tucson, AZ 85750-7202**

We will have samples at the meetings this month

**AMERICAN NEEDLEPOINT GUILD  
TUCSON CHAPTER**

ALL ITEMS INCLUDE ANG LOGO EMBROIDERY ON THE LEFT CHEST  
LARGER SIZES AVAILABLE

<b>POLO SHIRTS (mens sizing)</b>	Small 34-36	Med 38-40	Large 42-44	XL 46-48	XXL 50-52	XXXL 54-55		Add \$3.00 for XXL	TOTAL
White							X \$25		
Butter							X \$25		
Bimini Blue (like a carolina blue)							X \$25		
Navy Blue							X \$25		

<b>LADIES POLO SHIRTS</b>	Ladies Small 6-8	Ladies Med 10-12	Ladies Large 14-16	Ladies XL 18-20	Ladies XXL 20	Ladies XXXL		Add \$3.00 for XXL	TOTAL
White							X \$25		
Butter							X \$25		
Bimini Blue							X \$25		
Navy Blue							X \$25		
Mango (coral/salmon)							X \$25		
Light Pink							X \$25		

<b>SWEATSHIRTS</b>	Mens Small 34-36	Mens Med 38-40	Mens Large 42-44	Mens XL 46-48	Mens XXL 50-52	Mens XXX L 54-55		Add \$3.00 for XXL	TOTAL
White							X \$25		
Natural							X \$25		
Light Pink							X \$25		
Light blue							X \$25		
Navy Blue							X \$25		
Sand							X \$25		

<b>DENIM SHIRTS (mens sizing)</b>	Small 34-36	Med 38-40	Large 42-44	XL 46-48	XXL 50-52	XXXL 54-55		Add \$3.00 for XXL	TOTAL
Long Sleeve							X \$30		
Short Sleeve							X \$28		

**TOTAL AMOUNT DUE \$ \_\_\_\_\_**

Mens sizing has been used for a longer shirt. Smaller sizes are also available in sweatshirts and denim shirts.  
Please indicate if a smaller size is needed. Items will be delivered to meetings.

Name \_\_\_\_\_

Phone \_\_\_\_\_ Email \_\_\_\_\_

Make checks payable to  
**TUCSON CHAPTER ANG**

Mail to:  
Carol Karrle  
11705 Calle De Samuel Tucson, Az. 85749

# **The West** has re-opened!!

Please stop by and see our all **NEW LOOK** & Merchandise

**Expanded** Needlework Section

**Expanded** Thread Selection

**Expanded** Canvas Selection

Needlework   Gifts & Jewelry   Paper Products   Cards & Cookbook   Toys & Infant Items

Over \$1,800,000 in grants to local charities since 1981

Proceeds Benefit Women's & Children's Charities

Store Hours: Monday – Saturday 10 – 5

## **THE NEEDLE DANCER** **American Needlework Guild**

### **First Class**

**Do not delay**

Dated material