

THE NEEDLE DANCER

The Tucson Chapter
American Needlepoint Guild

<http://www.tucsonang.org>



November - December 2008

Tucson Chapter ANG Board 2008 – 2009

President	Margaret von Kuegelgen
VP Nights	Mary Christoph
VP Days	Barbara Ewbank
VP Days	Mary Williams
Treasurer	Judy Burgess
Night Secretary	Tami Schultz
Day Secretary	Honey Montrose
Director at Large	Linda Kanora
Director at Large	Charleane Boyles
Workshops	Barbara Lewis
Community Project	Sue Strause
Community Project	Margaret von Kuegelgen
Publicity-Advertising	Karen Swanson
Hospitality Nights	Linda Harris
Hospitality Days	Peggy Lawton
Hospitality Days	Vicki Aigner
Membership	Martha Hirsch
Newsletter Publisher and Editor	Donna Lawrence

ANG Mission Statement

The objective of this Guild is to promote the educational and the cultural development of needlepoint through the participation in and the encouragement of the interest in the art of needlepoint. <http://www.needlepoint.org>

Calender 2008

Day Meeting: Pima County Medical Society Building, 5199 E Farness Dr

Night Meeting: Streams in the Desert Lutheran Church, 5360 E Pima (1/2 block w. of Craycroft)

Board Meeting: Woods Library 6:00p.m.

Stitch-In: 3rd Saturday of the month. The West classroom (River/Craycroft Rds)

November

SUN	MON	TUE	WED	THU	FRI	SAT
						1
2	3	4	5	6	7	8
9	10	11	12	13 Board Meeting Woods Library At 6 pm	14	15 Stitch-In at The West 10 am – 5 pm
16	17	18	19	20	21	22 Combed Pot Luck Luncheon and Meeting at Day Meeting Site at 10 am
23	24	25	26	27	28	29
30						

DECEMBER

SUN	MON	TUE	WED	THU	FRI	SAT
	1	2	3	4	5	6
7	8	9	10	11 Board Meeting Woods Library 6 pm	12	13
14	15	16	17	18	19	20 Stitch-In at The West 10 am – 5 pm
21	22	23	24	25 MERRY CHRISTMAS	26	27
28	29	30	31			

JANUARY – DATES TO REMEMBER!

- **JANUARY 1, 2009 – HAPPY NEW YEAR!!**
- **JANUARY 8, 2009 – Board Meeting at Woods Library at 6 pm**
- **JANUARY 17, 2009, Saturday – Stitch-In at The West 10 am – 5pm**
- **JANUARY 28, 2009 – Night Meeting**
- **JANUARY 22, 2009 – Day Meeting**

PLEASE NOTE THAT THE DAY AND NIGHT MEETINGS ARE IN DIFFERENT WEEKS!

PRESIDENT'S LETTER

Hello Fellow Stitchers!

Well, here we are in the middle of November. I'm madly stitching on a Christmas present for my daughter and son-in-law...hope the rest of you are better organized than I!

Keep in mind I will be asking for volunteers for the Nominating Committee at the January meetings. If anyone is interested in serving on the Board, don't be shy! Step right up and tell me. I will forward the information on to the Nominating Committee. We need volunteers for committee chair positions as well as for the elected board.

Since this is a combination November/December newsletter and we have no meeting in December, let me take this opportunity to wish all of you happy, safe, and terrific holidays!!!!!!

See you at the November combined meeting,
Margaret

Hospitality

LINDA HARRIS – NIGHTS and PEGGY LAWTON – DAYS

Bring your favorite "Dish to Share" to our Combined Pot Luck Luncheon Meeting on November 22, 2008. The meeting will be at the Pima County Medical Society, day meeting site. Volunteers are needed to help set up and clean up after lunch. Please call Linda Harris or Peggy Lawton to volunteer your assistance.

Workshops

Barbara Lewis

Keep March 21,22,24,25 open for two exciting workshops! Deborah Forney will be the instructor. She is an excellent teacher and has two great projects

The first is entitled “The Gypsy Butterfly”. Here you will learn about color and texture, etc. and then how to apply it to a canvas using many different threads and ribbons. The cost for this class will be \$120. This includes the canvas, booklet, and all of the threads, many of which, we are unable to get here in Tucson.

The second is “Or Nue’ Unleashed”. Here we will learn about the technique of Or Nue’ and how to use it on modern painted canvases. It is really stunning. When I saw what she was doing with Or Nue’ at seminar I was overwhelmed! Or Nue’ is no longer just used for fancy pieces using a lot of gold work. You have a choice of colors for your eyeglass case of blacks, rusts, and gold or version two is the Rainbow colorway. The cost for this kit is \$50, but you will need to bring your own threads....all readily available at the local shops.

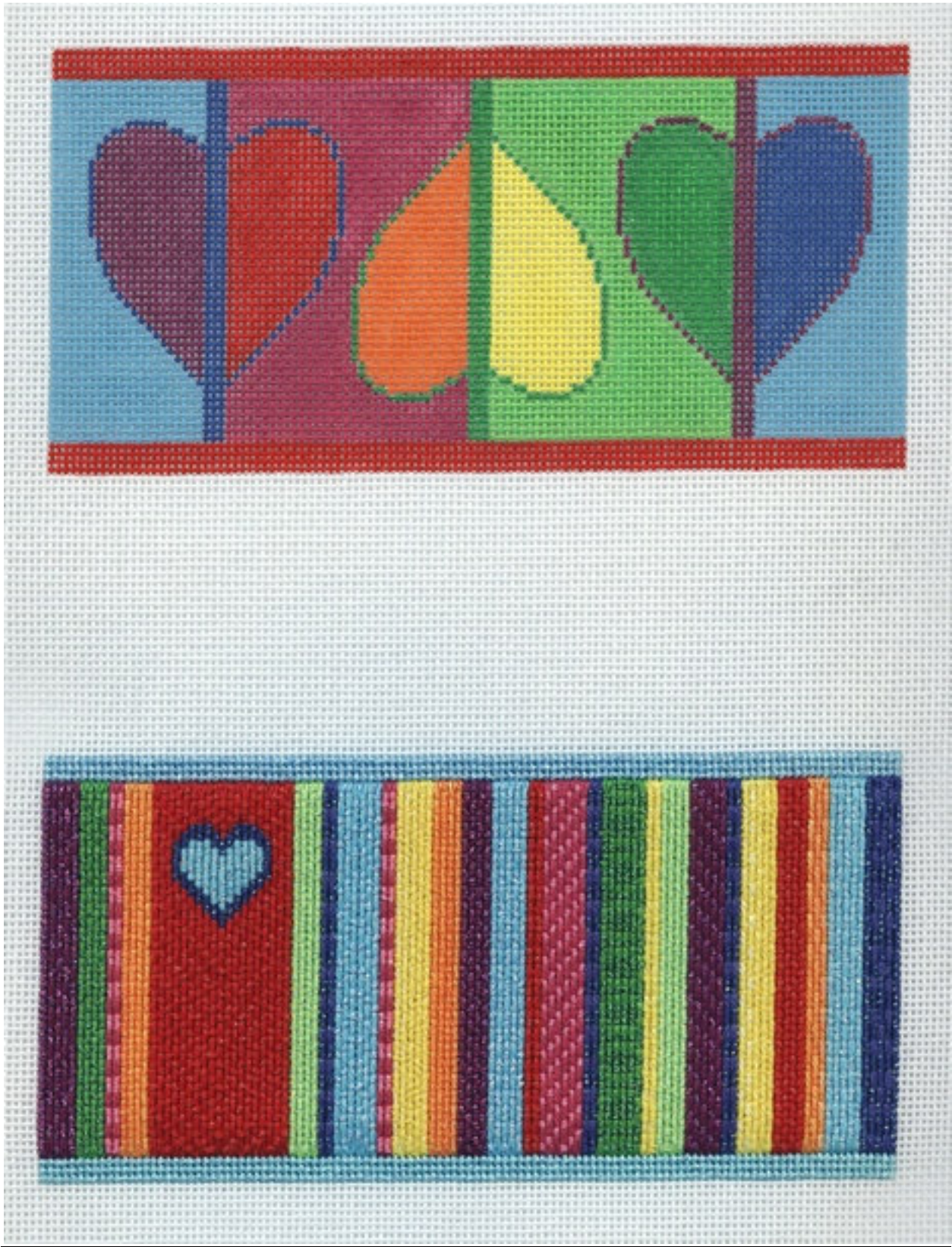
THE CUT-OFF DATE IS THE END OF JANUARY!!!!

This is important as we don’t have a lot of time, especially with the holidays coming up. I will accept partial payment starting now so bring your checkbook along to the November 22nd combined meeting. I will have the pictures of both projects and you can tell me which color you would like.

To send me a check, make it out to Tucson Chapter ANG and mail to Barbara Lewis, 8041 E. Presidio Rd., Tucson, 85750.







FROM THE DIRECTORS AT LARGE

CHARLEANE BOYLES AND LINDA KANORA

Linda and I would like to thank all of you who have donated items for the Opportunity Baskets. We will have some very nice baskets for the combined November meeting.

For all of you who have not gotten around to cleaning out your stash, it is okay. Linda and I will continue collecting because there will be more Opportunity Baskets to fill for our May combined meeting.

So just remember when you have stash items that you no longer want or need, please give them to either Charleane or Linda. You may give them to us at any time at either meeting or at a Board meeting. Thanks again for all your help and donations.

Editor's Note

I would like to take this opportunity to wish everyone a Happy Thanksgiving; a wonderful Christmas; and a Happy New Year!! May you have all your Holiday stitching done!

If you have an item to put in the Needle Dancer, I would love to include your contribution. Please send it to me as early as possible. The deadline is 4 pm on the Saturday after the Board meeting. This gives me time to edit the newsletter. Also, please use 14 pt type if you can.

PROGRAMS

Submitted by Mary Christoph

November - Join us on November 22, 2008 for a combined potluck luncheon at Pima County Medical Society. We will have open stitching at 10:00 a.m. and lunch at 12:00p.m. followed by Barbara Mayo Grass's lecture on Samplers.

2009 Programs:

January – Join Myldred Richardson as she leads in stitching Whimsey, the December 2001 Stitch of the Month. Please print the instructions at

<http://www.needlepoint.org/StitchoftheMonth/2001/Whimsy/index.php>

Since Rachel is no longer available, Myldred has selected threads and canvas that can be obtained from The West. Please see the table below.

WHIMSEY THREAD AND CANVAS CHOICES

Watercolours	Balger	Neon Rays	Patina	Anchor # 8	Flair	Canvas
Twilight	23	N 98	PA 44		F570	Brown
Vanilla	101	N 91	PA 01		F595	Gray
Peach Sherbet	713	N 10	PA 01		F505	Rose Blush
Pine Forest	2829	N 35		208	F512	Santa Fe Sage
Grand Canyon	2829	N 35	PA 135		F511	Eggshell

This should be a fun project. If you need help with the Sprats Head (like me), you can look at the January 2001 Stitch of the Month on how to work it.

February – We will be exploring the effect the of color using simple diaper patterns with Linda Kanora. This will be quick stitching, knots allowed and no laying of threads required. You may be surprised at the difference color placement can make!!

Please bring:

- 8”x 8” count canvas
- 2 or 3 shades for each of 2 or 3 thread colors (floss, perle, specialty threads, your choice) from your stash, one of your favorite color combinations.

March – Honey Montrose will be teaching us a lovely Blackwork project.

April – Honey will continue her project in Blackwork OR you can stitch on your own project to finish them in time to be included in the drawings at the May combined meeting.

If you have an idea for a program you would like to see in the coming year, please let the Vice Presidents know. We would love to hear from you.

MEMBERSHIP

Martha Hirsch

There are only a few of us who still need to pay their dues through the end of this fiscal year that ends **May 31, 2009**.

Please remember that national dues are paid separately and paid directly to National. It is necessary to remain current with your national dues to be a member of any ANG chapter.

Several members have found it confusing that in this year we are paying different amounts. If my explanation below doesn't work for you, please give me a call.

Here's the brief explanation:

Annual dues are \$18.00, which equals \$1.50 per month. Your dues have been prorated for this fiscal year based on what has been your annual renewal date. For this year, we each pay dues for part of our fiscal year of June 1, 2008 through May 31, 2009. Next year, everyone in the chapter will renew for the entire year at the same time.

Mail your checks to: Martha Hirsch.

Make your checks payable to Tucson Chapter ANG.

Members listed below need to pay chapter dues through May 31, 2009. You will find the amount you owe listed beside your name.

Anthony \$12
Bregantini \$6
Fortunato \$4.50
Postlewaite \$12
Strause \$12

Galdi \$6
Hitchens \$7.50
Larsen \$3
Tewksbury \$7.50
Wood \$9

McNealy \$3

Roster changes:

Pepper Pfeiffer

Patty Godfrey

Dropped Members

Barbara Kammersell

Tucson Chapter ANG Renewal and Address or E-mail Change Form

Name _____ Phone _____

Street Address _____

City and State _____ ZIP+4 _____

E-mail _____ FAX _____

ANG Number _____

Tucson Chapter Member \$18.00

(P) Plural Member \$18.00

IF YOU DO NOT PLAN ON RENEWING – PLEASE ADVISE

Please make checks payable to: **TUCSON CHAPTER ANG**

Send Payment to:
Martha Hirsch

The West ~~ The West ~~ The West

December 12th through December 24th ~~ 25% off Christmas canvases

After Christmas sale begins December 27th ~~ 50% off Christmas items, excluding needlework

November 30th through December 21st – Open Sundays from 12 until 4

**Shop at The West! Proceeds benefit women's & children's charities in Tucson!
Over \$1,800,000 in grants to local charities since 1981**

**Store Hours: Monday – Saturday 10 – 5 ~~ Open Wednesday nights until 8
5615 E. River Rd. (River & Craycroft) ~~~ www.thewestinc.com ~~~ 520-299-1044**

THE NEEDLE DANCER American Needlework Guild

First Class

Do not delay